



OWNER'S MANUAL

Assembly & Operational Instructions

⚠ WARNING

Please read instruction carefully before use and retain them in a safe place for future reference. Read all instruction before assembly and use of the walker.

LFC-G63



INDIA'S TOP BRAND

SERIES

ADVENTURE

Stardust SUV

IS15644:2006



CM/L6700079217

www.bis.gov.in

The Leotoon Battery Operated Rideon are Manufactured in Accordance with the Product Safety Standards to ISO8124, En71, ASTM F963, ST, GCC, AS/NZS 8124, CCPSA, 55474

2 About "LEOTOON" Product

Thank you for purchasing Leotoon Ride-ons. We have devoted ourselves to create comfortable and safe electronic toys, thus offering a colorful childhood for your children.



It is very important to read these instructions carefully before usage. This instruction Book not only specifies "**Assembly Process**" but also **Proper Application Method**. It also helps to avoid Injury or damage to the Product in case of Incorrect operation.

All Parts to be Assembled By Customer (DIY)



In case any missing parts are noticed; Please call **+91 9176-796-955** or write to **customer@parultoy.com** rather than returning this product to the store. Wipe the surface of the each part with a clean, cloth to remove any dust. Please identify all parts before assembly and save all packaging material until assembly is completed to ensure that no parts are discarded.

Walker Parts Details

1	Car Body (1U)	6	Backrest with Light (1U)
2	Windshield (1U)	7	Back Wheel (2U)
3	Seat (1U)	8	Wheel Covers (4U)
4	Steering (1U)	9	Remote (1U)
5	Front Wheel (2U)	10	Washer/Lock (4U)

Care and Maintenance :

1. Do not use if there is any damage.
 2. Check and maintain the toy at regular interval to keep your child safe.
 3. Periodically check and make sure that neither screws are loosen nor any spare parts are damaged.
 4. Before installing and using the toy, please check all spare parts carefully, for avoiding unnecessary damages
- Please read the instruction in detail before assembly and disassembly.

Follow us : leotoonindia



Technical Specification :

Model No	: LFC-G63
Product Size	: L 101 x B 61.5 x H 68 (Cm)
Package Size	: L 92 x B 52.5 x H 40 (Cm)
Gross Weight	: 14.600 Kg
Net Weight	: 12.150 Kg
Age	: 3~7 Years
Country of Orgin	: India
Unit CBM	: 0.193
40 HQ Load Quantity	: 350 Units
Load Capacity	: 20 Kg
Material	: Polypropylene
Speed	: Three Speed

Functional Specifications :

- * 2B (6V/5AH) VRLA Battery
- * 2M (380) 12V/15000 RPM
- * LED Lit Windshield
- * Dual Color Headlights
- * 2.4 GHz Remote Control
- * Forward and Real Rocking
- * Bluetooth & Mobile Control
- * With All Wheel Soft Suspension
- * 3 Level Speed Adjustment In Remote
- * English Story & Music With MP3 & USB Interface

Stardust SUV Assembly Illustrations

STEP 1



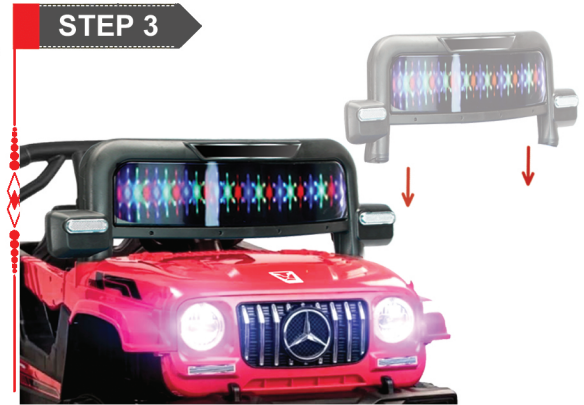
Front Wheel Assembly

STEP 2



Rear Wheel Assembly

STEP 3



Windshield Assembly

Press Fit & Tighten the Bolt Front Wheels to the Jeep.

Press Fit & Tighten Back Wheels to the Jeep.

Press Snapfit the Windshield to the Jeep.

STEP 4



Backrest Assembly

STEP 5



Music Tray Toys Assembly

STEP 6



Jeep Seat Assembly

Fix the Backrest to the Jeep as Illustrated.

Press Fit Steering to the Jeep as illustrated.

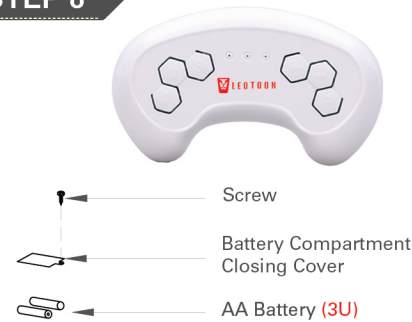
Press Fit the Seat and Screw to the Jeep as Illustrated.

STEP 7



Wheel Cup Assembly

STEP 8



Remote Pair with Jeep

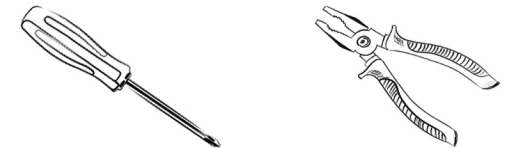
Screw

Battery Compartment Closing Cover

AA Battery (3U)

Assembly Steps :

- * This product requires adult assembly. Please set aside at least 10 minutes for assembly.
- * Please identify all parts before assembly and save all packaging material until assembly is complete to ensure that no parts are discarded.
- * Assembly tools needed: **Screwdriver, Pliers & Spanner (Not Included).**



Press Fit the Wheel Cover to the Wheel as Illustrated.

Please Insert the New Battery to Remote if Light Blinking in Remote then Switch on the jeep

WARNING !

Read the instructions carefully before use and keep them for the future Reference. Child may get hurt if you do not follow these instructions.

- * Prevent access to stairs, steps and uneven surfaces.
- * Prevent collisions with glass doors, windows, and furniture.
- * Do not use the kids ride-on if any components are broken or missing.
- * This kids ride-on should be used only for 30 minutes a day.
- * This kids ride-on is intended to be used by children Age 3 ~ 7 Years.
- * It is not intended for children Weighing more than 35 Kgs.
- * Do not use replacement parts other than those approved by Company.
- * Clean friction components regularly to maintain good performance.
- * The rideon is intended to be assembled by an adult.

Battery Care !

- * Non-rechargeable batteries are not to be charged.
- * Different types of batteries or new and used batteries not to be mixed.
- * Exhausted batteries are to be removed from the toy.
- * The supply terminals are not to be short-circuited.
- * Batteries of the same type as recommended are to be used.
- * Batteries are to be inserted with the correct polarity.
- * Rechargeable batteries only to be charged under adult Supervision.
- * Do not throw batteries in open fire.

Caution !

- * Depleted or Unusual batteries must be disposed off separately. It is forbidden to throw them out in house hold waste containers. Dispose the batteries at the specified places.
- * Never leave child unattended.

Trouble Shooting

Ride-on Won't Start

: Check if the battery is charged. Ensure all connections are secure. If the battery is charged and connections are good, check for any damage or loose wires.

Stops suddenly during use

: Check the battery level. If the battery is low, recharge it. If the battery is fully charged, inspect the motor and wiring for any signs of damage or overheating.

Ride-on doesn't steer properly

: Please ensure that all the wheels are of same type and not mixed with other model wheels while packing. If it is so, write to the **customercare@parul toys.co.in** for correct wheels.

Rideon feels unstable / wobbly

: Check the wheels and axle for any damage Tighten loose bolts or nuts (If any). Ensure the ride-on is on a flat surface.

Lights or sounds don't work

: Check the batteries in the lights or sound modules. Replace them if necessary. Ensure all connections are secure.

doesn't respond to controls.

Check the control mechanism (e.g., Remote, accelerator pedal for any damage or obstructions. Ensure the batteries are installed correctly in the control unit.

SCAN FOR MORE DETAILS



WWW.PARULTOYS.CO.IN



LEOTOON

...a brand by **Parul Toys India Private Limited**

Factory : Plot 23-24, Sumangali Nagar, Vadaperumbakkam, Chennai-600060

Corporate Office : Suite I, 766, Shakti Tower, 6th Floor, Mount Road, Chennai-2

 **Web:** www.parul toys.co.in    **Follow us:** /leotoonindia

Customer Care : +91 917-679-6955 ; customercare@parul toys.co.in

Company Owned Brands :



#startupindia

Sedex

